

New Hampshire Technical Institute



Photo by Peter Finger



Photo by Peter Finger



Photo by Peter Finger



Photo by Peter Finger



Conceptual drawing by Travis Blake, NHTI Architectural Engineering Technology Student

Health Education Center



For more information, contact:
Office of Development
New Hampshire Technical Institute
31 College Drive • Concord, NH 03301-7412
603-271-8904 • nhticapitalcampaign@nhctc.edu • www.nhti.edu

*Health Education Center
Capital Campaign
Steering Committee*

Chair, **Beverly Grappone, RN,**
NH Technical Institute
Advisory Board

Carolyn Andrews, RN, Retired

Richard Berryman, DMD,
NH Technical Institute
Advisory Board

Robert Grappone, Owner,
The Grappone Companies

Lynn Kilchenstein, President,
NH Technical Institute

Ann McArdle,
Executive Director,
NH Forum on Higher
Education

Eldon Munson, Administrator,
Pine Rock Manor

Doug O'Brien, President/CEO,
The Grappone Companies

John Poirier, CEO/President,
NH Health Care Association

David Ruedig,
Financial Advisor and VP of
Investments, USB Financial
Services;
Chair, State Board of Education

Katherine Simonton, RN

Dr. William G. Simonton,
Commissioner, NH Community
Technical Colleges System

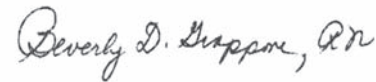
Conrad Trulson, Chair,
NH Technical Institute
Advisory Board

Building a Healthy Future

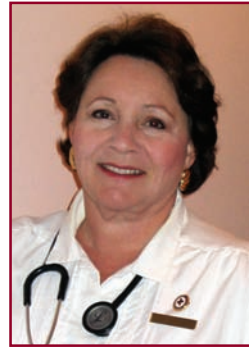
I am a nurse. I am also a wife, mother of five, volunteer and citizen of New Hampshire. Over the past several years, my husband, Bob, and I have provided nursing scholarships to students at many different programs, including NHTI. Assisting students to become nurses has been rewarding, but scholarships are not enough when programs are at capacity and cannot meet the ever-growing demand.

NHTI provides an excellent, affordable RN program. Their intensive instruction results in some of the highest nursing board scores in all of New Hampshire. This program is well worth expanding, and I have proudly agreed to lead a capital campaign to help reduce the critical nursing shortage.

Please join us by pledging your support for this project!



Beverly Grappone, RN
Campaign Chair



Investing In Our Communities



College graduates tend to contribute more taxes, donate more volunteer services, are law-abiding citizens, live healthier and longer lives, and are less dependent on social services. Your support of education is an investment in the social and economic well-being of our communities.



At NHTI, education is an investment in the future of health care. There is a critical shortage of nurses, dental hygienists and other allied health care professionals in our State. As the premier educator of these professionals, the College must take a leadership role in preparing many more New Hampshire residents for health and dental careers. Year after year, the College turns away prospective nursing students with impeccable credentials simply for lack

of teaching space. The College must meet this challenge by increasing our capacity.

Supporting our campaign for a Health Education Center will help us respond to the increasing threat posed by the shortage of qualified health care professionals. Your investment will have a lasting impact not only on the quality of life for our citizens, but contribute to the continued economic vitality of our region for years to come.



Lynn Kilchenstein, President
NH Technical Institute



Dr. William G. Simonton, Commissioner
NH Community Technical Colleges System

Building Our Future . . . Caring for Yours

The health and well-being of New Hampshire residents depends upon skilled health care professionals. Yet, the quality and availability of health and dental care are threatened by a growing statewide shortage of nurses, dental hygienists, and other allied healthcare professionals. This shortage affects all of us, from our elderly who lack skilled nursing home care . . . to cancer patients in need of radiation therapists providing life-saving treatments . . . to children needing access to routine dental care. Yet, our current health care education programs are not graduating enough professionals to meet the rising demand.

- ▶ The State will require 577 new registered nurses each of the next 10 years, according to the New Hampshire Board of Nursing and the American Association of Community Colleges
- ▶ New Hampshire's nursing schools are graduating just over 300 RNs annually.
- ▶ The College currently turns away 55% of the *qualified* applicants due to lack of space.

Vision of Quality Health Care

As the State's premier provider of allied health care professionals, New Hampshire Technical Institute is taking a leadership role in providing solutions to meeting the demand for allied health care providers. Our vision is to develop a Health Education Center designed to respond to the critical shortage of nurses, dental hygienists and other allied health care professionals. The NHTI Health Education Center will allow the College to increase nursing enrollment by 60%. The new facility will allow us to:

- ▶ Add an estimated 45 RN's to New Hampshire's workforce each year
- ▶ Offer new programs for advanced nursing degrees and continuing education
- ▶ Develop an RN re-entry program for nurses who want to return to the work place

Investing In Success

In launching the \$3 million capital campaign for the nursing education component of the Health Education Center, the College is building upon the public and private partnership we have forged among the health care community, corporate givers, charitable organizations and generous private citizens. The Health Education Center will mean:

- ▶ Better access to quality health care as our graduates enter the work force
- ▶ Generate downward pressure on health care costs through the increased availability of qualified staff
- ▶ Provide greater financial security and rewarding careers for our students.

For all of New Hampshire, the Health Education Center will enhance our quality of living and economic vitality. The return on investment will continue to pay dividends for decades to come.



Bob Grappone, Owner
The Grappone Companies

"I like a campaign like this because it supports something the healthy do to be healthier; it makes good business sense and it will make society better."

Why the shortage of nurses?

- ◆ 50% of current NH nurses will reach retirement age with 10 years
- ◆ Only 10% of all nurses are age 30 years or younger
- ◆ 21% of NH residents will be over 65 years old and the number will double over the next 30 years
- ◆ The State's population is growing by 15,000 residents per year

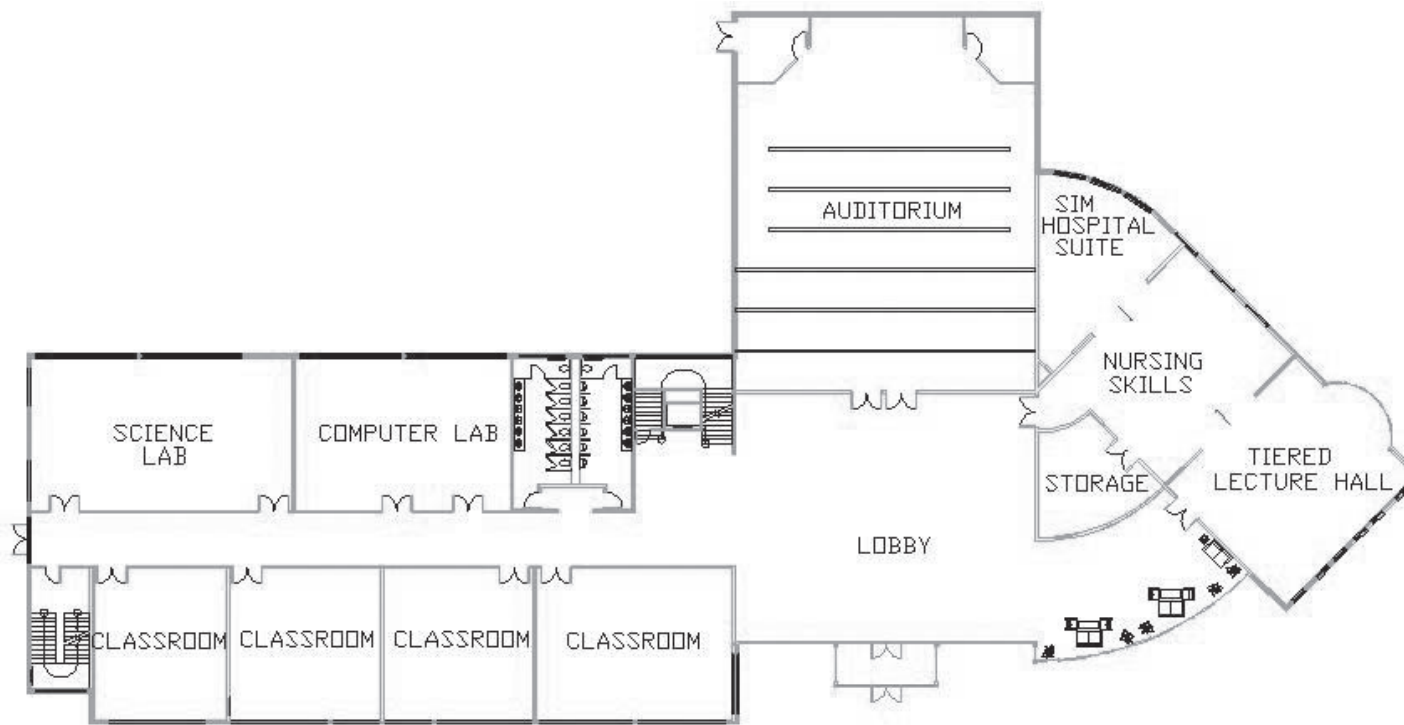
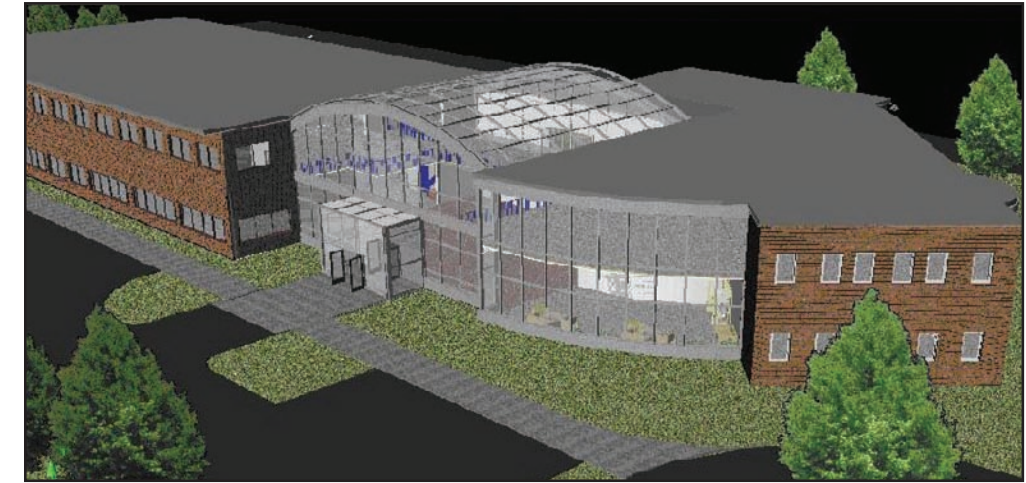
"There is a clearly identified problem with a very realistic, achievable solution that will benefit students, health care patients, the business sector and the community."



David Ruedig,
Chair, State Board of
Education

Building Our Future . . . Caring for Yours

The NHTI Health Education Center



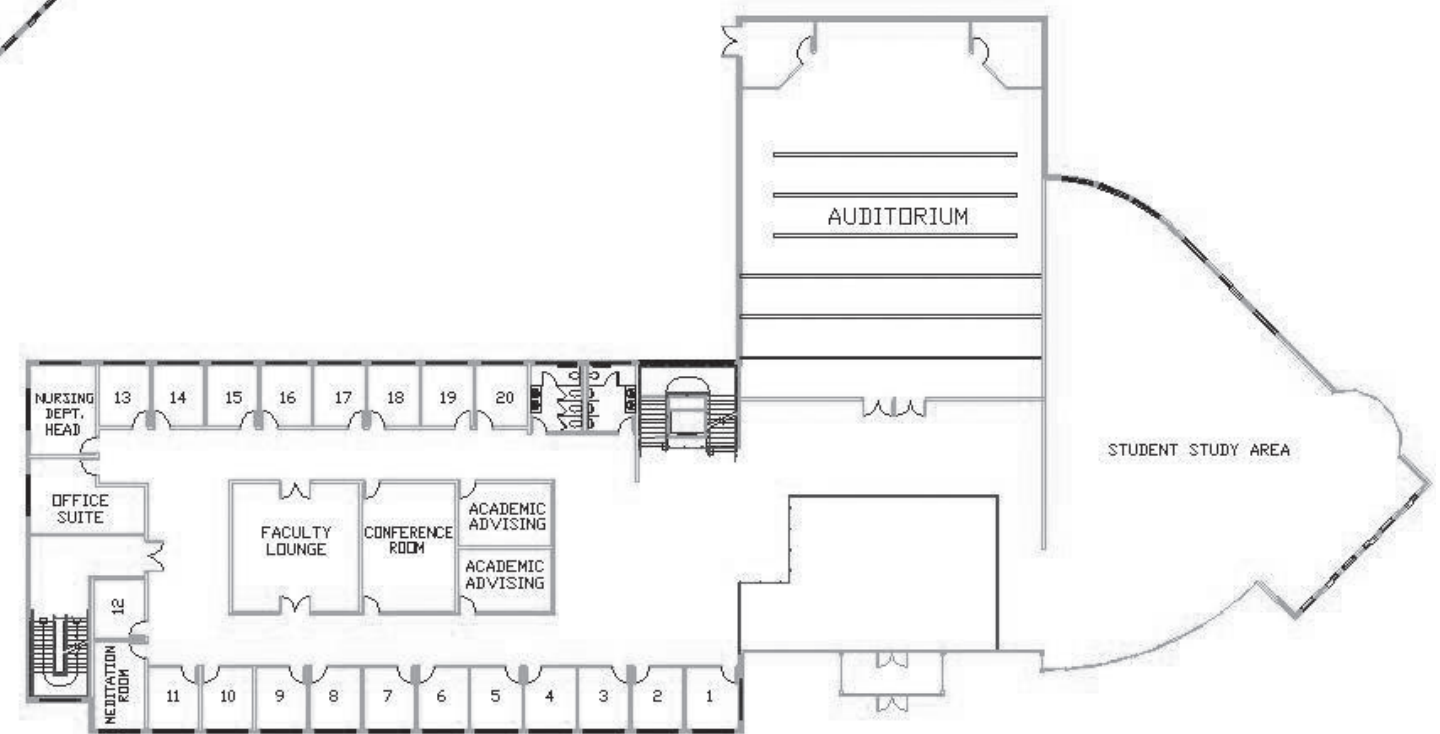
Ground Floor

The Project

- ◆ Simulated Nursing Skills Lab
- ◆ Simulated Hospital Nursing Suite
- ◆ Tiered Lecture Hall
- ◆ Auditorium & Lobby
- ◆ Student Learning Center
- ◆ Science Lab
- ◆ Faculty Suite & Lounge
- ◆ Academic Advising Rooms
- ◆ Conference Room
- ◆ Lecture Halls

The Programs

- ◆ Increase Nursing Enrollment by 60%
- ◆ Increase RN Program by 25%
- ◆ Launch RN Workforce Re-entry Program
- ◆ Expand LPN or RN Program
- ◆ Partner with 4-yr. School to initiate Nursing Bachelor of Science Program
- ◆ Develop CEU Courses
- ◆ Develop NCLEX Review



Second Floor

NHTI Facts

Founded 1965
Enrollment 1965 265

Student population 2004
Enrollment 3,926
Male 38.6%
Female 61.4%
Fulltime 58.3%
Parttime 41.7%
NH Residents 97%
Remain in NH
after graduation 95%
Commuters 90%
Live on campus
Approximately 350

Associate
degree programs 33

Certificate programs 27

Diploma programs 3

“There’s no way I’d be entering the nursing profession without the great support I received at NHTI.”



Alecia Cargill, RN
Concord Hospital
Class of 2004

A Community Resource

The mission of New Hampshire Technical Institute is to provide opportunities for students to follow their dreams, to find pathways to achieving their career objectives and following their personal passions. Our goal is to set students on a lifelong course that leads to their becoming productive citizens who support a thriving business environment and contribute to the overall health of our community.

The College is particularly focused on providing low and moderate-income students with broad access to higher education, vital workforce development opportunities, and professional training across a wide range of subjects. Our student population is diverse in age, socio-economic status, life experiences, and academic abilities. For some, the College serves as a cost-effective path to a successful career. For others, the College offers an excellent, low-cost entry point into higher education. Small classes and extensive support services help students succeed. NHTI is responsive to the complex lives of its students, many of whom work and raise families while attending college. We serve more than 4,000 students through day and evening classes, distance learning opportunities, business and industry-specific training workshops, and courses at off-campus locations extend our accessibility.

Students contribute thousands of hours of community service for free oral health screenings and after-school tutoring programs, to blood pressure screenings for the homeless and by organizing blood drives. NHTI faculty and staff work with area high school students extensively through the Project Lead the Way and Project Running Start career exploration/college preparation initiatives. More than 70,000 people visit campus each year for professional development, free lectures, films and other cultural events, and to use our athletic fields, and scenic trails.

NHTI is Concord’s Community College, serving its citizens in myriad ways and contributing significantly to the economic and cultural vitality of the region.

How to Make A Gift

Cash

Giving cash is as simple as writing a check, charging your MasterCard or Visa, or wiring or transferring funds electronically.

Pledges

A pledge allows you to make a gift over as many as five years. The College will send you pledge reminders according to the schedule your request. You may make a pledge online at www.nhti.edu.

Matching Gifts

Some companies match charitable gifts given by their employees. Forward your company’s matching gift form with your gift. If your organization doesn’t have a formal program, ask them to consider matching your gift.

Securities

Donating securities that have appreciated in value and have been held for more than 12 months may offer tax advantages.

Real Estate

Real estate that has been held for more than 12 months and has appreciated in value may be donated to the campaign with the same tax advantages as gifts of securities.

Recognition Opportunities

The Campaign offers numerous permanent naming opportunities. Rather than receiving personal recognition for their generosity, individuals and businesses may instead recognize an organization, or commemorate a loved one or associate by naming a room or area in honor of the individual or organization.

Commitments of \$100,000 and more earn donors permanent membership in the *President’s Circle*, the College’s most prestigious donor recognition group. Other donors receive recognition at the following levels for the duration of the campaign. Those who give at least \$1,000 will be included in a prominently displayed plaque in the Health Education Center.

Leadership Society

President’s Circle	
Platinum	\$1 million
Gold	\$500,000-999,999
Silver	\$250,000-499,999
Bronze	\$100,000-249,999
Guardian	\$50,000-\$99,999
Ambassador	\$25,000-\$49,999
Patron	\$10,000-24,999
Friend	\$5,000-9,999
Donor	\$1,000-4,999



John H. Lynch
Governor of New Hampshire

“You’re working to respond to new challenges in our economy and our workforce by increasing the number of nurses, dental hygienists and allied health care professionals that you train. Once again, NHTI is recognizing a need and figuring out a way to respond to it.”

Your Tax-deductible Gift Stays within NHTI

New Hampshire Technical Institute is state assisted, not state funded. When you give to NHTI, 100% of your investment goes directly into the College. All donor gifts are managed by the NHCTC System Foundation, a tax-exempt 501(c)(3) charity, in a fund dedicated to the College and the purpose for which they are given.

For details on these and other ways to support NHTI, ask for our *Ways to Make a Gift to New Hampshire Technical Institute* brochure.

Office of Development New Hampshire Technical Institute

31 College Drive
Concord, NH 03301-7412
603-271-8904
nhticapitalcampaign@nhctc.edu
www.nhti.edu



John Poirier,
CEO/President,
NH Health Care Association

“If we don’t have enough nurses, either we won’t be able to provide care for everyone who needs it, or we won’t be providing high-quality care.”